

Clatsop County Housing Strategies



Presentation to COLPAC
April 11, 2024

Clatsop County By The Numbers



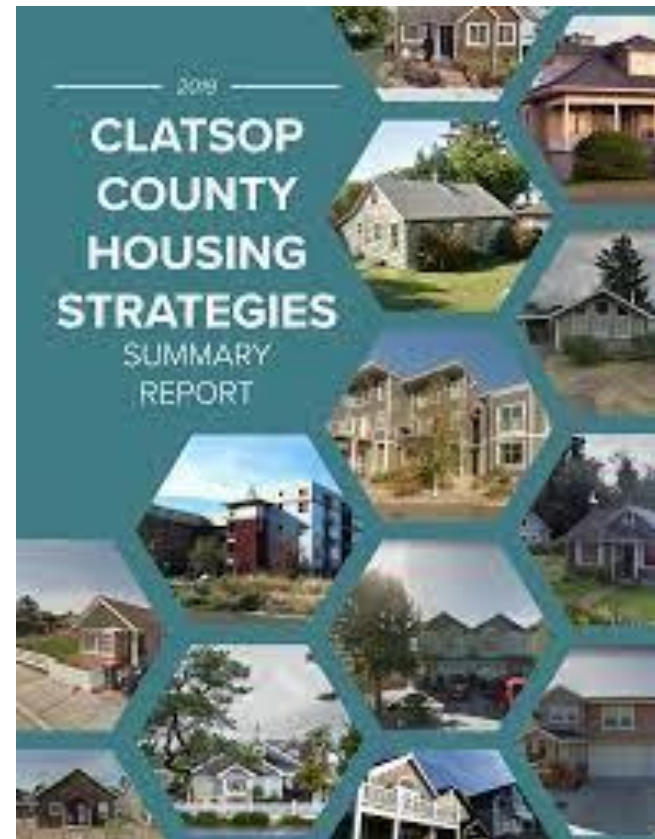
Population:	41,695
Employed Population:	18,593
Median Age:	44.5
Median Income:	\$61,846
Median Property Value:	\$340,700
Poverty Rate:	9.93%



SOURCE: DATA USA 2021

<https://datausa.io/profile/geo/clatsop-county-or>

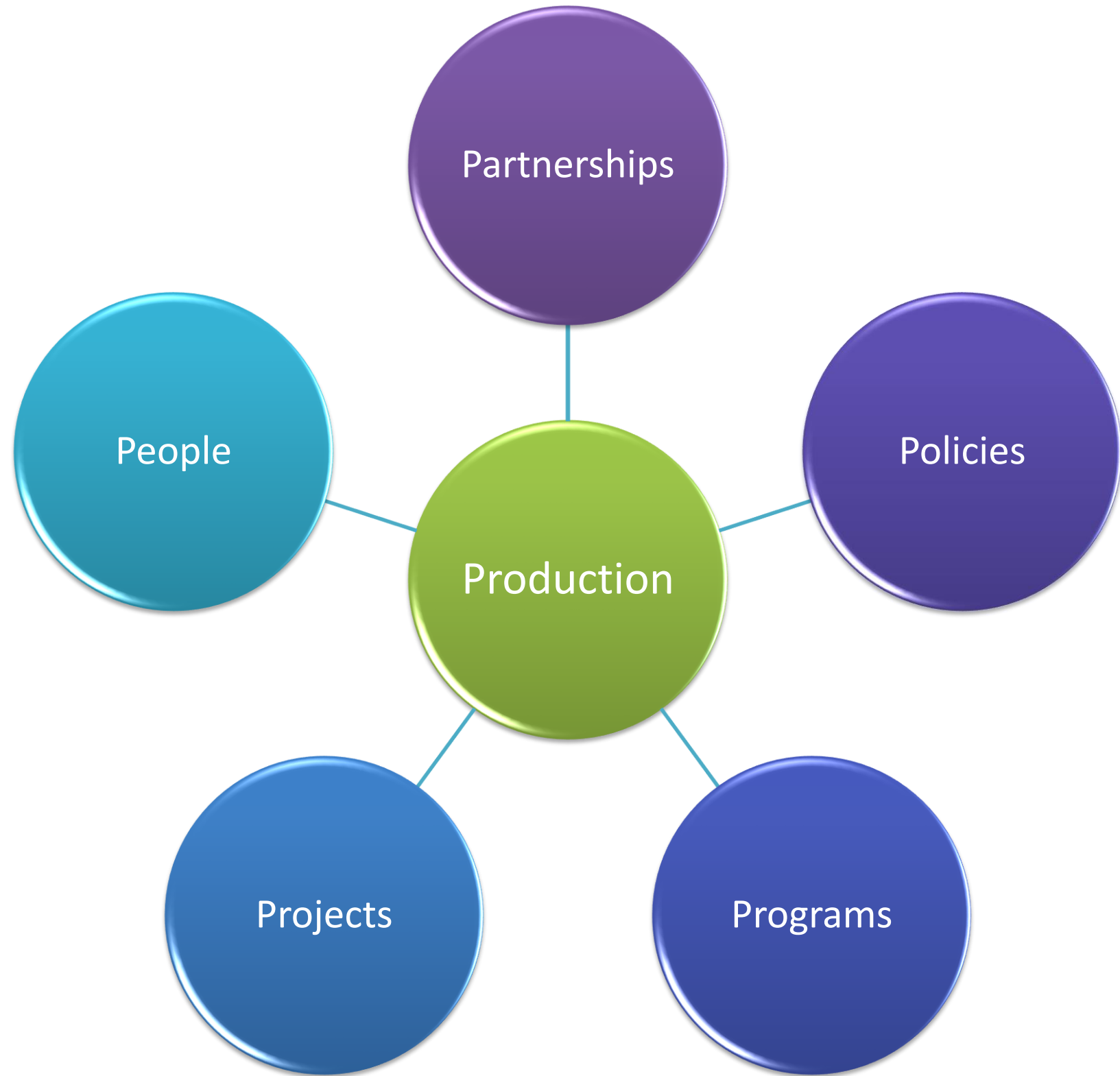
Continued County Commitment to Housing



- Projected 1,500 new housing units across the county to accommodate current and future residents, while allowing for a continued supply of vacation properties
- Much of the housing supply in Clatsop County is used for vacation housing, not permanent residences.
- There is a full range of housing needed in the future, from single family homes, to townhomes, to apartments, to subsidized affordable housing and emergency shelters. The county should consider the need to add all types of supply for households at a range of incomes.
- Strategies should focus on the needs of the county's current and future workforce (at all income levels.)



Clatsop County's Role In Housing



Partnerships



Assisting Cities

- Seaside North North Forty RFP
- Cannon Beach code update

Regional Collaboration

- Regional Housing Task Force
- DLCDC Housing Planning Project



Partnerships



DLCD Housing Planning Assistance Grant

- Timeline: February 2024-April 2025
 - Scope: Buildable Lands Inventory
Housing Infrastructure Inventory
Building Supply Inventory
 - Astoria Housing Capacity Analysis (HCA) 2026
 - 2019 Housing Study Recommended BLI Refinement, Regional Approach
-

Partnerships



Homelessness Emergency

- MAC Group- Governor's EO
- Columbia Inn Shelter- Project Turnkey
- 80 new shelter beds
- 82 households rehoused
- 2023 PIT Count- over 1000 individuals (more than Washington and Clackamas)
- 1 in 40 people in Clatsop County are homeless



Policies



- Governor's Housing Production Advisory Council (HPAC)
 - Oregon Housing Needs Analysis Rulemaking (OHNA)
 - Clatsop County Economic Opportunities Analysis (EOA)
 - Clatsop County Housing Code Changes (CAOS)
-

Programs



Brownfields Assessment for Housing

- Copeland Commons, Astoria
- North North Forty, Seaside

ARPA Predevelopment Funding

- Owens II, Astoria
- Copeland Commons, Astoria

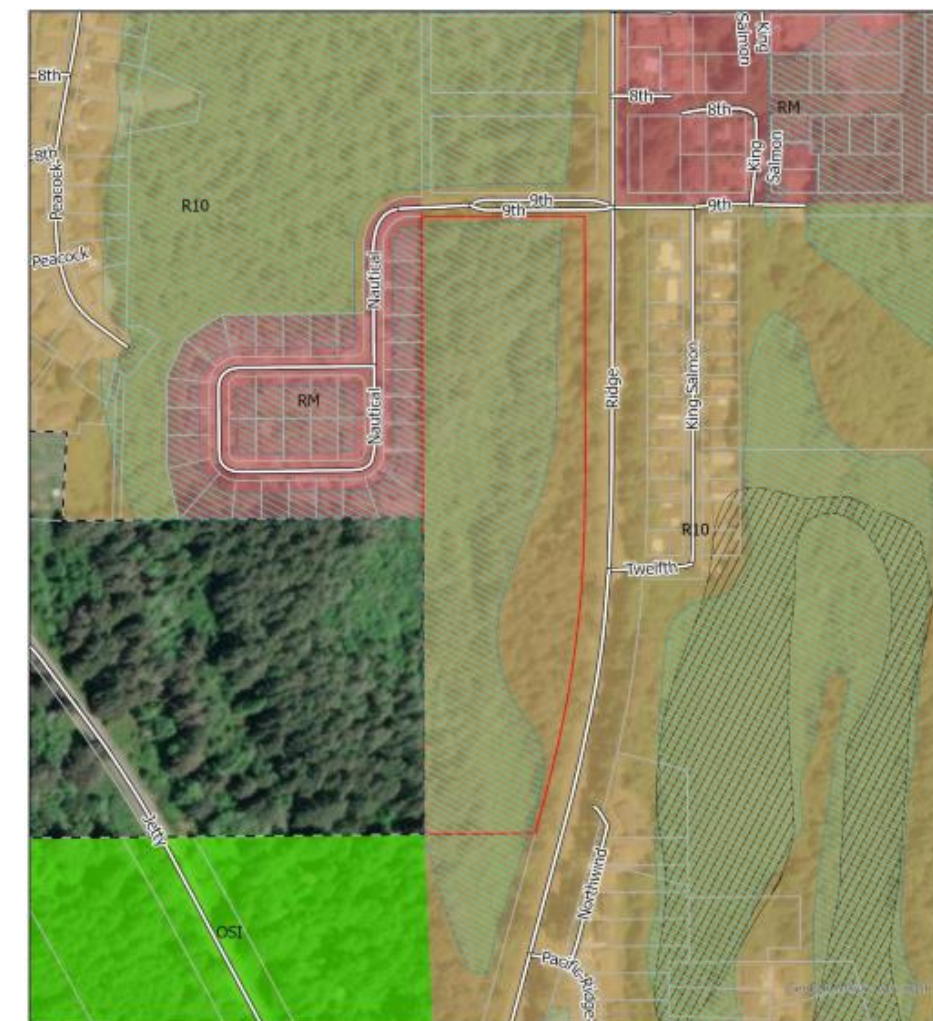


Programs



County Land for Housing Production

- Property Management Policy Update
- Identification of Possible Sites
- Four Sites Considered “High” Suitability



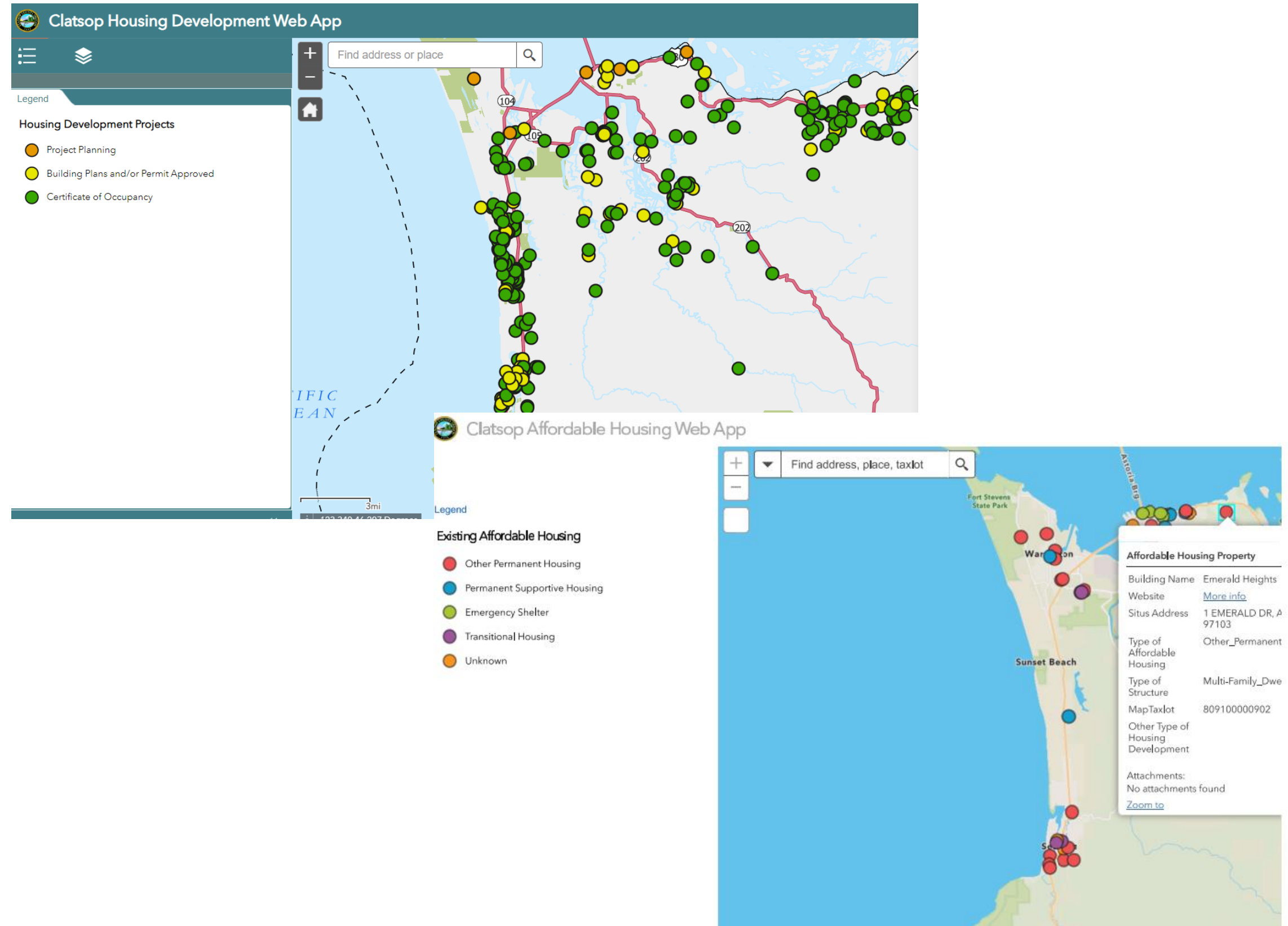
Warrenton Taxlot 810080000400
Affordable Housing Candidate Sites



Clatsop County Housing Dashboard

<https://www.clatsopcounty.gov/county/page/clatsop-countys-housing-dashboard>

Programs



Potential



Collaboration Between Counties

- Housing Funding
- Infrastructure Funding
- Policy Advocacy
- Construction Workforce
- Employer Partnerships



QUESTIONS?



Elissa Gertler
Clatsop County Housing Manager
egertler@clatsopcounty.gov

